

ELM327 Powerful Functions

Wifi Version | Bluetooth Version | USB Version



Инструкция по подключению автосканера
ELM327 OBD2
к смартфону и компьютеру

WIFI conction

- software installation
- **WIFI connection**
- function display



1 Open WIFI switch



2 Find "V-LINK" Click to connect



3 Click "Connection" Connect with car and WiFi

Software Installation

- **software installation**
- WIFI connection
- function display



1 Search "ELM327" in APP Store



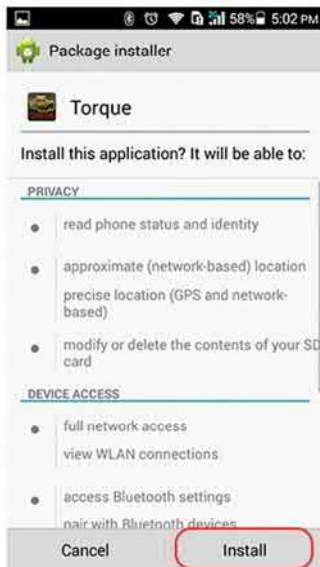
2 Click "install" Waiting for installation



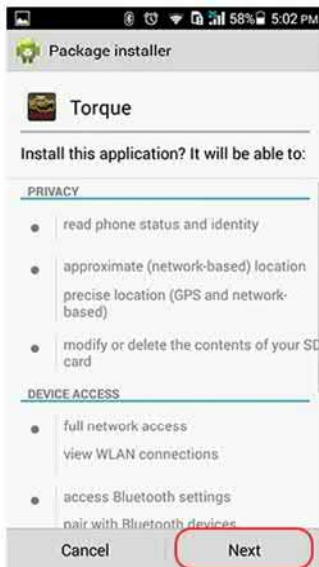
3 Click "OPEN" Open software

Software Installation

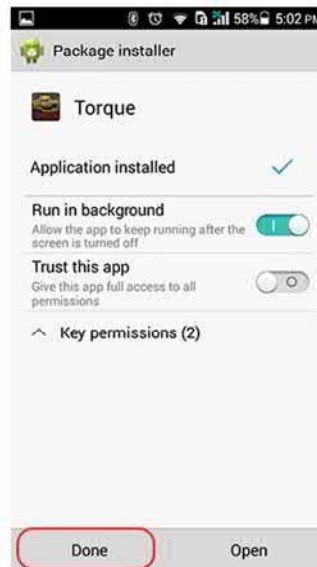
- software installation
- connect bluetooth
- function display



1 After insertion of ELM327
Install APP: Install"



2 Continuous click "Next"
Continue the next installation



3 Click "Done"
Install software

Connect Bluetooth

- software installation
- connect bluetooth
- function display



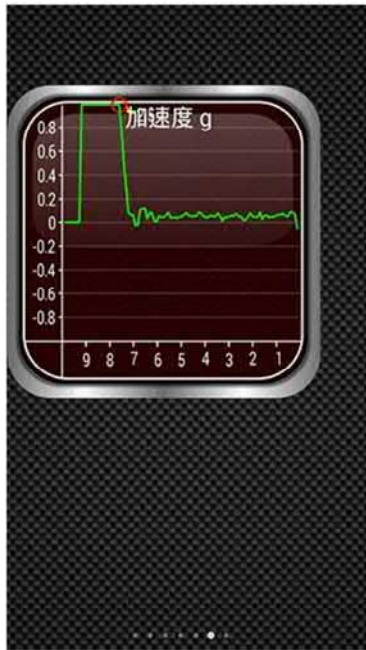
1 Turn on the
Bluetooth switch



2 Find "OBD II"
The password "1234"



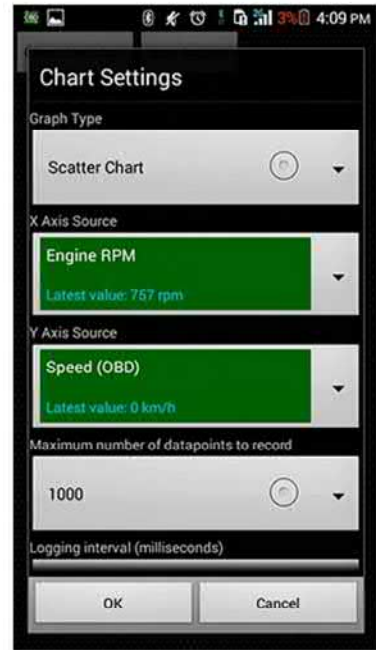
3 Enter the software
set the connection
Way "Bluetooth"



• Vehicle Speed



• Vehicle model&Test Result



• Graph Type

Function Display

- software installation
- connect bluetooth
- function display



• Software main interface



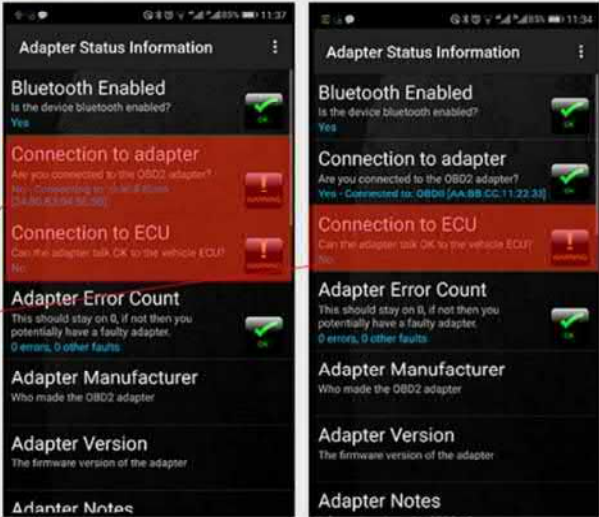
• Display current sensor data



• Engine RPM

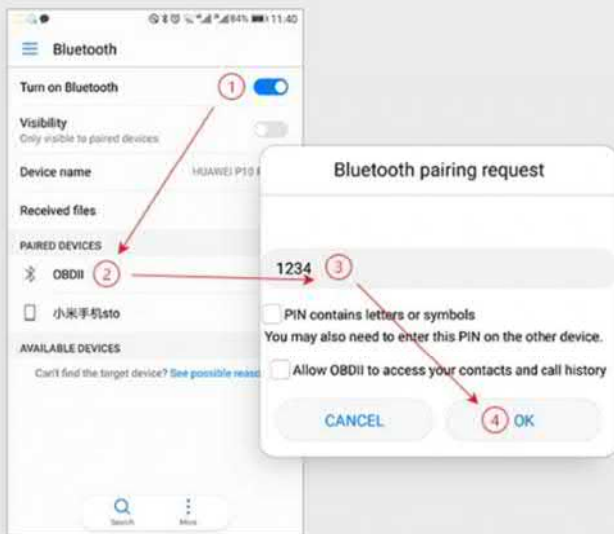
Question 1

If you meet the problem like the picture as below:

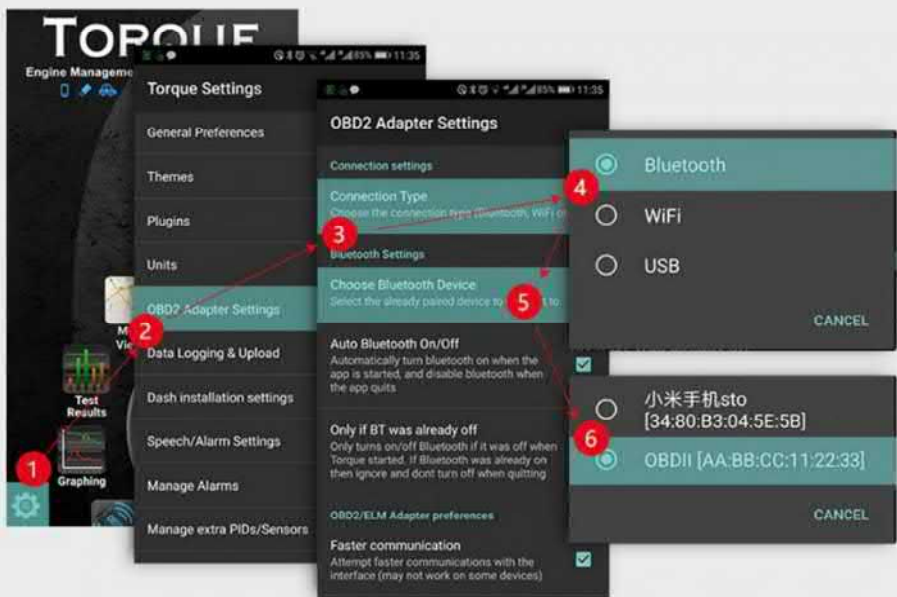


1 Exit the software, and enter it again

2 Open the "setting" of your android, and search bluetooth from ELM327:OBDII, then input password 1234.



3 3. Open your Torque---setting---OBD2 Adapter Settings---Connection Type---Bluetooth---back---Choose Bluetooth Device---OBDII[AA:BB:CC:11:22:33].

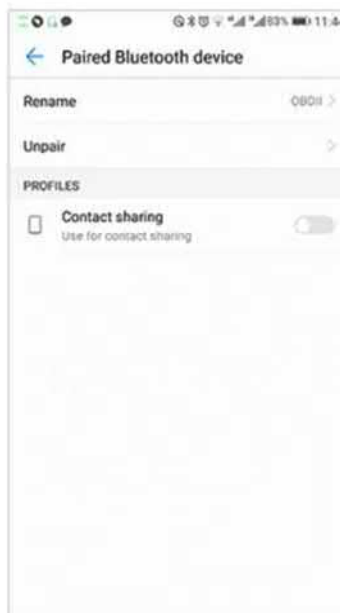


Question 2

Appear "Adapter Error count"



1. open your bluetooth,unpair the OBDII.
2. Exit the Torque
3. Plug out the elm327 and plug in it again
4. Open the Torque.Then repeat solution 1



Question 3
Appear "Faster Communication"



Choose faster communication in "setting"

